



## TENDER DOCUMENT

# BHP

**Under instructions from BHP PTY LTD**

**Tender closes Friday 21<sup>st</sup> September 2018 at 4:00pm (AWST)**

Contact: Matt Kalinski +61 (0) 418 488 011 or [matt@auctions.com.au](mailto:matt@auctions.com.au)

# 1 TABLE OF CONTENTS

2	Tender Details.....	3
2.1	Tender Conditions .....	3
2.2	Tender Process Flow.....	4
2.3	Tender Date Schedule .....	5
2.4	Lodgement of Tenders.....	5
2.4.1	Electronic Lodgement.....	6
2.4.2	Written Lodgement .....	6
2.5	Tender Acceptance .....	6
2.6	Tender Payments.....	7
2.6.1	Tender Deposit .....	7
2.6.2	Tender Invoice Payment.....	7
3	Asset Inspections .....	7
3.1	Inspection Registration.....	7
3.2	Travelling To Site .....	8
3.3	Accommodation .....	9
3.4	Personal Protective Equipment Requirements .....	9
3.5	Site Inductions .....	9
3.6	Site Conduct.....	9
3.7	Occupational Safety and Health Obligations.....	9
4	Asset Removal .....	10
4.1	Capabilities Statement .....	10
4.2	Scope of Work .....	10
5	Annexure A – Manual Bid Submission.....	11
6	Annexure B – Inspection Registration .....	14

Under instructions from **BHP Pty Ltd**, offers are invited for the purchase and removal of two Tenova TSM 300 Surface Miners plus associated Inventory and Spares.

Please ensure you have read the limiting conditions of this tender document. Submission of tenders will be considered as acceptance of these conditions.

Please direct all enquires to Matt Kalinski +61 (0) 418 488 011 or [matt@auctions.com.au](mailto:matt@auctions.com.au)

**Important:** All communication must be directed through the above named contact.

## 2 TENDER DETAILS

---

### 2.1 TENDER CONDITIONS

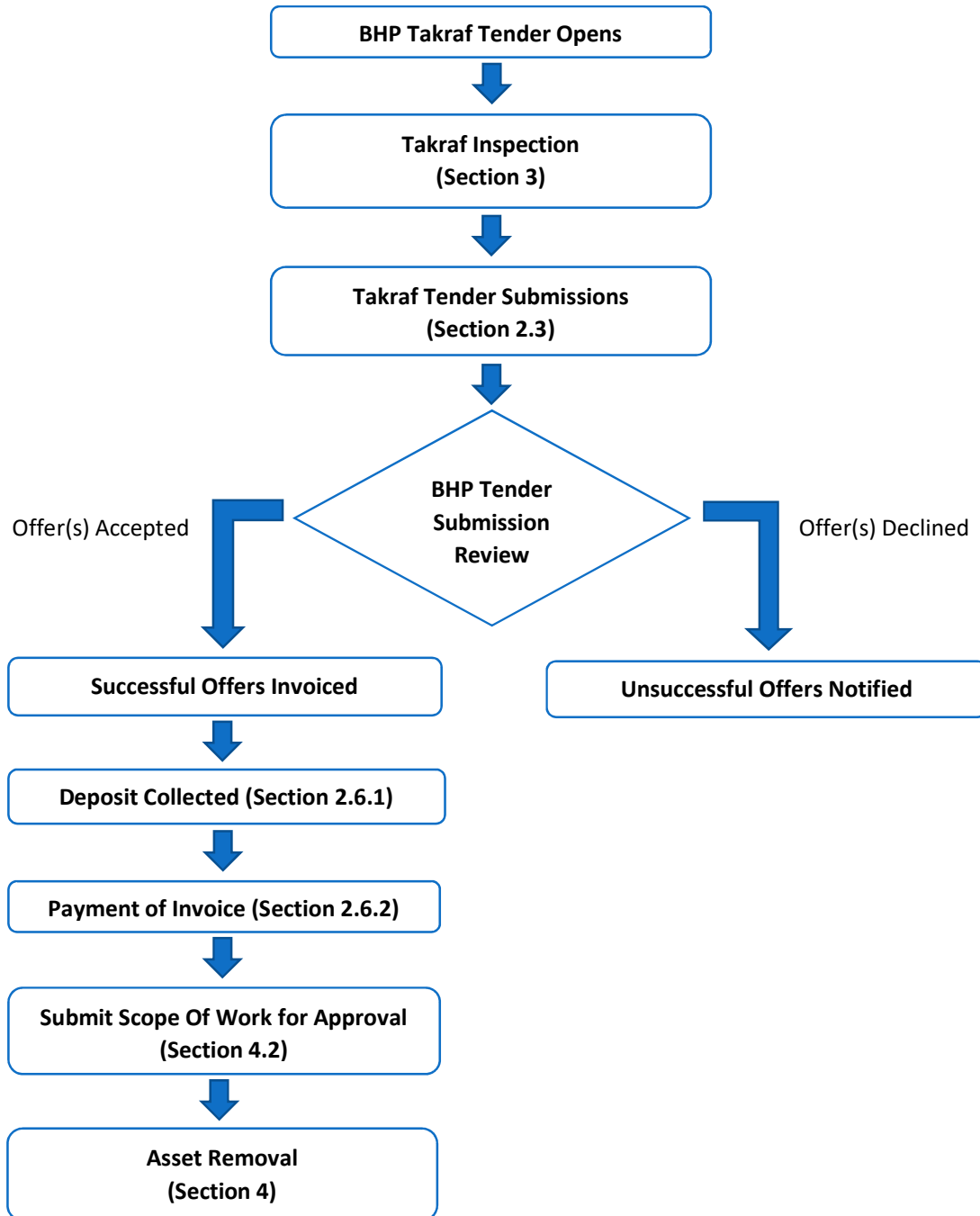
BHP Pty Ltd and Ross's Auctioneers and Valuers expressly disclaim all implied consumer guarantees to the fullest extent permitted by law.

While we have endeavoured to provide correct asset details, any descriptions and photographs of the Asset are deemed to be a guide only. The asset is used and is sold in "As is, Where is" condition.

By submitting an offer you agree that:

- You have been given sufficient opportunity to inspect the asset to which your tender bid relates, and that such inspection was sufficient to satisfy all your inquiries as to the quality and fitness for the purpose to which you intend to use the Asset;
- Your offers for purchase are made based on your inspection and assessment of each Asset; and
- If you do not inspect and assess the Asset, your offer for purchase will be deemed to have been made on the basis that you are aware of the quality of the Asset to that extent that such quality would have been evident had you inspected the Asset.

## 2.2 TENDER PROCESS FLOW



## 2.3 TENDER DATE SCHEDULE

**Tender Submission Deadline:** All tender offers must be received no later than **4pm Friday 21<sup>st</sup> of September 2018 (AWST)**

**Inspection Period:** Asset inspection will be permitted via appointment only.

Please refer to section 3 for full details of inspection attendance and registration requirements.

**Tender Decision:** A formal tender response by BHP should be made within five (5) working days of tender close, estimated on **Friday 28<sup>th</sup> of September 2018** (Section 2.5).

**Tender Deposit:** A minimum deposit of \$50,000 will be required from successful tenderers no later than five (5) days after successful tender notification (Section 2.4).

**Full Payment:** Full payment will be required no later than 30 calendar days from successful tender notification.

**Asset Removal:** All successful tenderers must remove the assets, per the asset removal schedule (Section 4)

## 2.4 LODGEMENT OF TENDERS

In order to successfully lodge a tender you **must comply** with the following:

- (i) Lodge the tender prior to the closing date of **4pm Friday 21<sup>st</sup> September, 2018 (AWST)**;
- (ii) Lodge the tender using approved methods outlined in section 2.4.1/2.4.2; and
- (iii) Complete a Capability Statement (Section 4.1).

All offers are to be made in Australian Dollars, exclusive of GST. Please note all offers will be subject to 5% Buyers Premium and GST. GST Exemptions for International buyers will need to conform to Australian Taxation Offices rules.

For example, an offer of \$1,000,000 AUD will become:

**{ \$1,000,000 + \$50,000 (5% Buyers Premium) } + \$105,000 (10% GST) = \$1,155,000 AUD**

GST Exempt Purchases, are required to comply with all Australian Tax legislation including proof of export.

**Important:** Please ensure you clearly state any special conditions on your tender bids; for example "Only want Lot 2 if successful on Lot 1". Special conditions must be clearly stated in the Comments/Special Conditions parts of the tender submission document or electronic portal.

#### 2.4.1 Electronic Lodgement

Tenders can be submitted electronically via the Ross's Auctioneers & Valuers website

<http://www.auctions.com.au/tenders>

**Please note:** Only Premium Members of the Ross's Auctioneers & Valuers website can use this tender submission method.

If you are not a Premium Member, visit <https://www.auctions.com.au/register> to become a Premium Member - no fees apply.

Upon receiving a successful online tender bid, a system generated confirmation email will be sent to your registered member email account. If you do not receive the confirmation email or need help lodging your tender bid through the online portal, please contact Matt Kalinski +61 (0) 418 488 011 or [matt@auctions.com.au](mailto:matt@auctions.com.au)

#### 2.4.2 Written Lodgement

Written tender offers will be accepted. If you wish to lodge a tender in writing, you are required to use the tender submission document provided (see Annexure A) in order for your submission to be considered.

Completed tender documents must be returned to:

Attn: Matt Kalinski  
Ross's Auctioneers & Valuers  
453 Orrong Road,  
Welshpool, Western Australia 6106

or scanned and emailed to [matt@auctions.com.au](mailto:matt@auctions.com.au)

Upon receiving a successful written lodgement, Ross's Auctioneers & Valuers will advise via email or phone call.

### 2.5 TENDER ACCEPTANCE

BHP anticipate that the final decision on successful tender will be made within five (5) working days of the tender close date.

Acceptance of any offer will be communicated in writing (by email, fax or letter) and will be deemed to have been communicated to the successful purchaser immediately (in the case of an email or fax where no notice of transmission error has been received by the sender) or by close of business on the day following mailing (in the case of a letter).

Date of such deemed communication will be the "Agreement Date".

Upon the Agreement Date, a binding contract of sale will arise as between The Vendor and the successful purchaser effective on the Agreement Date, the terms and conditions of which are those set out in the Conditions of Tender (Section 2.1).

A Tax invoice will be generated once acceptance has been communicated.

Unsuccessful tenderers will be notified by email.

## 2.6 TENDER PAYMENTS

### 2.6.1 Tender Deposit

If your tender bid is successful, you are required to pay a fifty thousand (\$50,000.00) AUD deposit within five (5) days of being notified in order to secure your tender bid.

This deposit must be paid via Electronic Funds Transfer into the following Trust account:

**Ross's Auctioneers & Valuers Trust Account**

**Bank:** Commonwealth Bank of Australia

**BSB Number:** 066 000

**Account Number:** 11832725

Please advise of the payment name when making the deposit. Please ensure you have recorded the transaction ID for verification.

If the successful purchaser fails to comply with the Conditions of Tender, The Vendor reserves the right to retain the deposit and/or any other monies paid and the right to resell the Asset in any manner and upon such terms and conditions they may see fit.

### 2.6.2 Tender Invoice Payment

Full payment of the Tax Invoice is required within thirty (30) days of tender acceptance. Payments are to be made via Electronic Funds Transfer (EFT) into the following Trust account.

**Ross's Auctioneers & Valuers Trust Account**

**Bank:** Commonwealth Bank of Australia

**BSB Number:** 066 000

**Account Number:** 11832725

**Deposit Reference:** Please use the Tax Invoice ID which was supplied by Ross's

Please ensure you have recorded the transaction ID for verification.

## 3 ASSET INSPECTIONS

---

Asset inspection will be available on at Yandi Mine strictly by appointment only.

All persons wishing to attend inspection are required to adhere to prerequisites detailed in sections 3.1 to 3.4.

**Please note:** Inventory and Spares are stored at 453 Orrong Rd, Welshpool. No formal registration is required. Contact Matthew Kalinski to organise an appointment.

### 3.1 INSPECTION REGISTRATION

All persons wishing to carry out inspection of the assets are required to complete a registration form and email it to [matt@auctions.com.au](mailto:matt@auctions.com.au). The form can be found in Annexure B. Failure to submit a registration form may result in refusal of inspection.



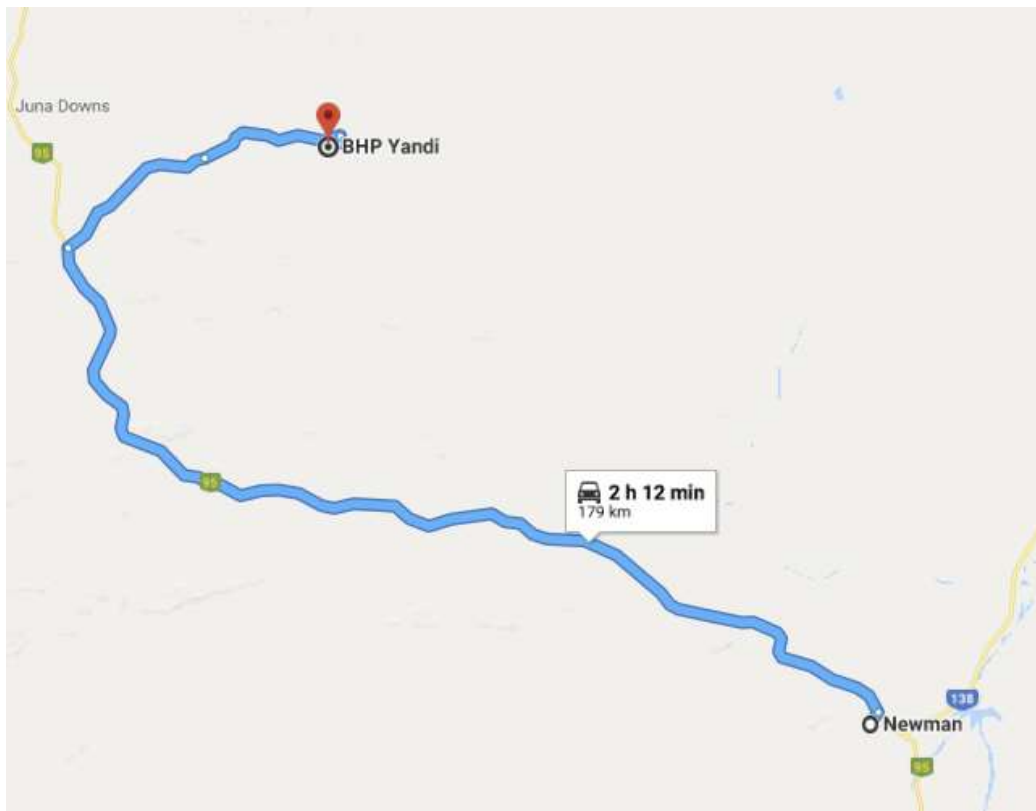
### 3.2 TRAVELLING TO SITE

Inspection attendees are required to make their own travel arrangements to the specified meeting points at the specified meeting times (Refer to table 3). Yandi Mine is approximately 90km from Newman.

Both Qantas Airways and Virgin Australia operate flights to Newman Airport, direct from Perth. Please refer to their respective websites for flight schedules and costs.

[www.qantas.com.au](http://www.qantas.com.au)

[www.virginaustralia.com.au](http://www.virginaustralia.com.au)





### 3.3 ACCOMMODATION

Newman has many suitable accommodation points if you require to spend the night. Please make your own bookings with your chosen hotel/motel. Some suggestions and contact details are listed below:

Oasis at Newman – 08 9328 1100

Newman Hotel – 08 9175 9300

Seasons Hotel – 08 9177 8666

### 3.4 PERSONAL PROTECTIVE EQUIPMENT REQUIREMENTS

The inspection site is an active site, thus you must adhere to strict Personal Protective Equipment (**PPE**) Requirements. You must supply and wear the following PPE equipment at all times:

- (1) Long sleeve High Visibility Shirt;
- (2) Long Trousers;
- (3) Safety Helmet;
- (4) ANSI approved Eye protection;
- (5) Gloves; and
- (6) Safety-toed boots (Over ankle), lace up only.

Please note that failure to wear the requisite PPE equipment may result in denied access to the inspection area.

### 3.5 SITE INDUCTIONS

Site specific inductions will not be required. All attendees will undertake an initial safety brief every morning prior to any inspections. All attendees will be supervised by authorised personnel at all times while they are on site.

### 3.6 SITE CONDUCT

As attendees will be visiting an active mine site, attendees are required to comply with all site conduct requirements.

Site conduct summary

- PPE must be worn at all times;
- You must stay within the designated inspection areas at all times; and
- No equipment can be operated during inspections unless by authorised BHP personnel.

### 3.7 OCCUPATIONAL SAFETY AND HEALTH OBLIGATIONS

Legislation of Western Australia imposes mandatory obligations, such as providing and maintaining a safe work environment, preventing exposure to, and protection from hazards on persons who use or operate plant in a workplace, and on employers whose employees

use or operate plant. If the buyer intends to use plant purchased at a workplace then it is the responsibility of the Buyer to inform themselves of these obligations.

Unless otherwise stated the plant to be sold has not been assessed or inspected by a competent person and it may or may not be affected by faults or defects, which make it unsafe for use. It is the responsibility of the Buyer to ensure assessment and inspection by a competent person.

The Legislation requires that owners of plant maintain safety and health information and records. The Auctioneers will pass on to the buyer all information made available to them by the owner, but the auctioneer does not warrant that the information and records are complete and accurate. It is the responsibility of the Buyer to familiarise themselves with all relevant information and records.

## 4 ASSET REMOVAL

---

It remains at all times the responsibility of the purchaser to remove the Asset(s) purchased from site. The purchaser will make their own arrangements for the removal and collection of the Asset. All removal plans will be submitted for review and acceptance by BHP via Ross's Auctioneers & Valuers.

The Asset must be removed from site within four (4) weeks of final availability.

### 4.1 CAPABILITIES STATEMENT

As a requirement for the tender, all tenderers must supply references and examples of previous equipment removal projects. This ensures that BHP and Ross's Auctioneers and Valuers will have an accurate understanding of the tenderers capabilities of ensuring the safe and timely removal of the assets.

### 4.2 SCOPE OF WORK

A condition of sale will be the provision of a scope of work from the Buyer that will provide, as a minimum, the following information:

- The successful tenderer will be required to complete a sales agreement.
- All removals will be in accordance with policies and procedures as required by BHP;
- Tenderers will be required to outline loading activities including timings, proposed routes of travel, proposed use of contractors and conformance to BHP site specific terms and conditions;
- A detailed risk assessment and relevant JHA's to be completed and distributed for approval by BHP; and
- All removals will be supervised by a BHP Representative.

## 5 ANNEXURE A – MANUAL BID SUBMISSION

---

### *Written Tender Submission*

**Name:** \_\_\_\_\_

**Company Name:** \_\_\_\_\_

**Company Address:** \_\_\_\_\_

**Contact Number:** \_\_\_\_\_

**Contact Email:** \_\_\_\_\_

### **Tender Lot 1**

2009 TENOVA TAKRAF TSM300 SURFACE MINER,  
**MACHINE HOURS:** 361 HRS  
**ASSET NUMBER:** SM2001  
**SERIAL NUMBER:** 13801  
**MATERIAL:** IRON ORE,  
**UNCONFIRMED COMPRESSIVE STRENGTH:** UP TO 60 MPa,  
**RATED CAPACITY:** 172 bm<sup>3</sup>/H,  
**PEAK CAPACITY:** 450 bm<sup>3</sup>/H,  
**CUTTING CIRCULAR DIAMETER:** 1.6M,  
**DRUM WIDTH:** 3.75M,  
**CUTTING RATE:** MAX. 5 m/s,  
**NOMINAL DRIVE POWER AT THE DRUM:** 2X 240kW,  
**MAX CUTTING HEIGHT:** 0.8M,  
**MAX CUTTING WIDTH:** 3.8M,  
**DRIVING SPEED AT RATED CAPACITY AND MAX CUTTING HEIGHT:** 1.67 M/min,  
**NUMBER OF CRAWLERS:** 3,  
**AVERAGE GROUND PRESSURE:** APPROX. 127 kPa,  
**DRIVING SPEED:** 0-20 M/min,  
**OUTREACH LOADING BOOM:** 12.9M,  
**MAX. HEIGHT DISCHARGE PULLEY:** APPROX. 6.9M,  
**TOTAL INSTALLED POWER:** 839kW,  
**SERVICE WEIGHT:** APPROX. 125.5t

Tender Lot 1 offer: \_\_\_\_\_

(Offers will have Buyers Premium of 5% and GST of 10% Applied)

**Tender Lot 2**

2009 TENOVA TAKRAF TSM300 SURFACE MINER,

**MACHINE HOURS:** 183 HRS

**ASSET NUMBER:** SM2002

**SERIAL NUMBER:** 13802

**MATERIAL:** IRON ORE,

**UNCONFIRMED COMPRESSIVE STRENGTH:** UP TO 60 MPa,

**RATED CAPACITY:** 172 bm<sup>3</sup>/H,

**PEAK CAPACITY:** 450 bm<sup>3</sup>/H,

**CUTTING CIRCULAR DIAMETER:** 1.6M,

**DRUM WIDTH:** 3.75M,

**CUTTING RATE:** MAX. 5 m/s,

**NOMINAL DRIVE POWER AT THE DRUM:** 2X 240kW,

**MAX CUTTING HEIGHT:** 0.8M,

**MAX CUTTING WIDTH:** 3.8M,

**DRIVING SPEED AT RATED CAPACITY AND MAX CUTTING HEIGHT:** 1.67 M/min,

**NUMBER OF CRAWLERS:** 3,

**AVERAGE GROUND PRESSURE:** APPROX. 127 kPa,

**DRIVING SPEED:** 0-20 M/min,

**OUTREACH LOADING BOOM:** 12.9M,

**MAX. HEIGHT DISCHARGE PULLEY:** APPROX. 6.9M,

**TOTAL INSTALLED POWER:** 839kW,

**SERVICE WEIGHT:** APPROX. 125.5t

Tender Lot 2 offer: \_\_\_\_\_

(Offers will have Buyers Premium of 5% and GST of 10% Applied)

Tenderer Name : \_\_\_\_\_

### Tender Lot 3

- **PLEASE NOTE THIS LOT INCLUDES THE TWO 20 FOOT CONTAINERS THAT THE ITEMS ARE STORED IN.**

QTY	TAKRAF SPARES - STORED IN 2X 20' CONTAINERS & CRATE (INCLUDING CONTAINERS)
2	20FT GP CONTAINER
1	PALLET OF 36 TINS OF SANDVIK, SAW TEETH #P6DX-3876-2180 (PICKS)
1	PALLET OF 36 TINS OF SANDVIK SAW TEETH #P6DX-3876-2180 (PICKS)
1	PALLET OF 36 TINS OF SANDVIK SAW TEETH #P6DX-3876-2180 (PICKS)
1	PALLET OF 36 TINS OF SANDVIK SAW TEETH #P6DX-3876-2180 (PICKS)
2	ROLLS ELECTRIC CABLE FITTED WITH 5 PIN 63AMP 500V PLUGS
1	CRATE OF TAKRAF AXLE#G-EMBABZG52007034
1	CRATE OF TRACK DRIVE COMPONENTS BEING PINS, ROLLERS IDLER, SPRINE RACK, SPROCKETS
1	CRATE RAHMANN ELECTRIC ACTUATOR 7.7KW 400V 12AMP CPS-50
1	CRATE OF STAMFORD ALTERNATOR 85KVA TYPE UCI224G2 S/NO-0258798-001
1	CRATE OF 2 TAKRAF IDLER
1	CONDENSER FAN #EBMPAPSTW4D500-GD03-01
1	CONDENSER AND FAN ASSEMBLY (#W4D500-GD03-01)
1	CARTON FAN BLOWER ASSEMBLY EBMPAPSTK3G097-AK34-43
1	CRATE OF TAKRAF MACHINERY GLASS
1	CARTON OF 1 X REXROTH 80MM PIN16 BUTTERFLY VALVE
1	CARTON OF EBMPAPST BLOWER ASSEMBLY K3G097-AK34-43

Tender Lot 3 offer: \_\_\_\_\_

(Offers will have Buyers Premium of 5% and GST of 10% Applied)

Tenderer Name : \_\_\_\_\_

**Important:** Please attach the Capabilities Statement (Section 4.1) and Scope of Work (Section 4.2) with the submission.

## 6 ANNEXURE B – INSPECTION REGISTRATION

---

### *Inspection Registration*

**Name:** \_\_\_\_\_

**Company Name:** \_\_\_\_\_

**Company Address:** \_\_\_\_\_

**Contact Number:** \_\_\_\_\_

**Contact Email:** \_\_\_\_\_

**Preferred Date of  
Inspection:** \_\_\_\_\_

**Additional Notes:** \_\_\_\_\_